

LORA INTERVAL SELECTION

In the context of LoRa technology, "interval in seconds" (LoRa Int.(s)) refers to the time duration between data transmissions by a LoRa device. A longer interval results in less frequent transmissions, which enhances energy efficiency—particularly for battery-powered devices. Conversely, shorter intervals allow for more frequent data transfers but can deplete battery life more quickly.

This parameter is crucial in optimizing device performance for specific applications, balancing data transfer frequency with energy consumption.

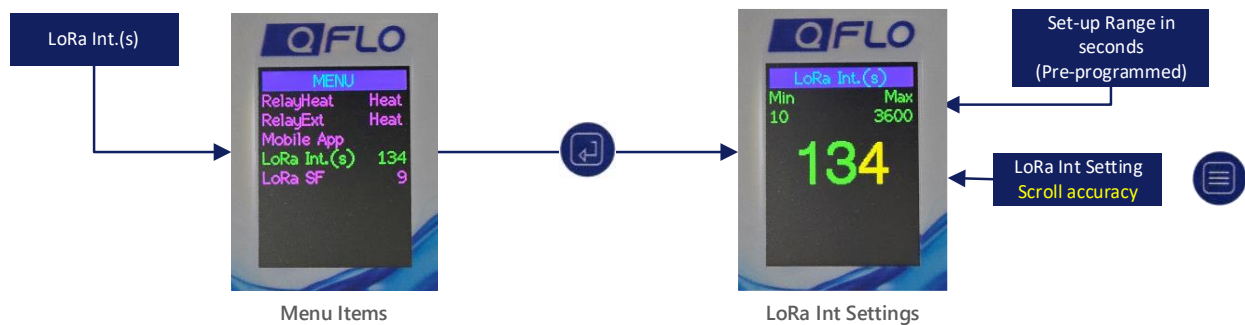


Figure 1: Mobile Application Displays

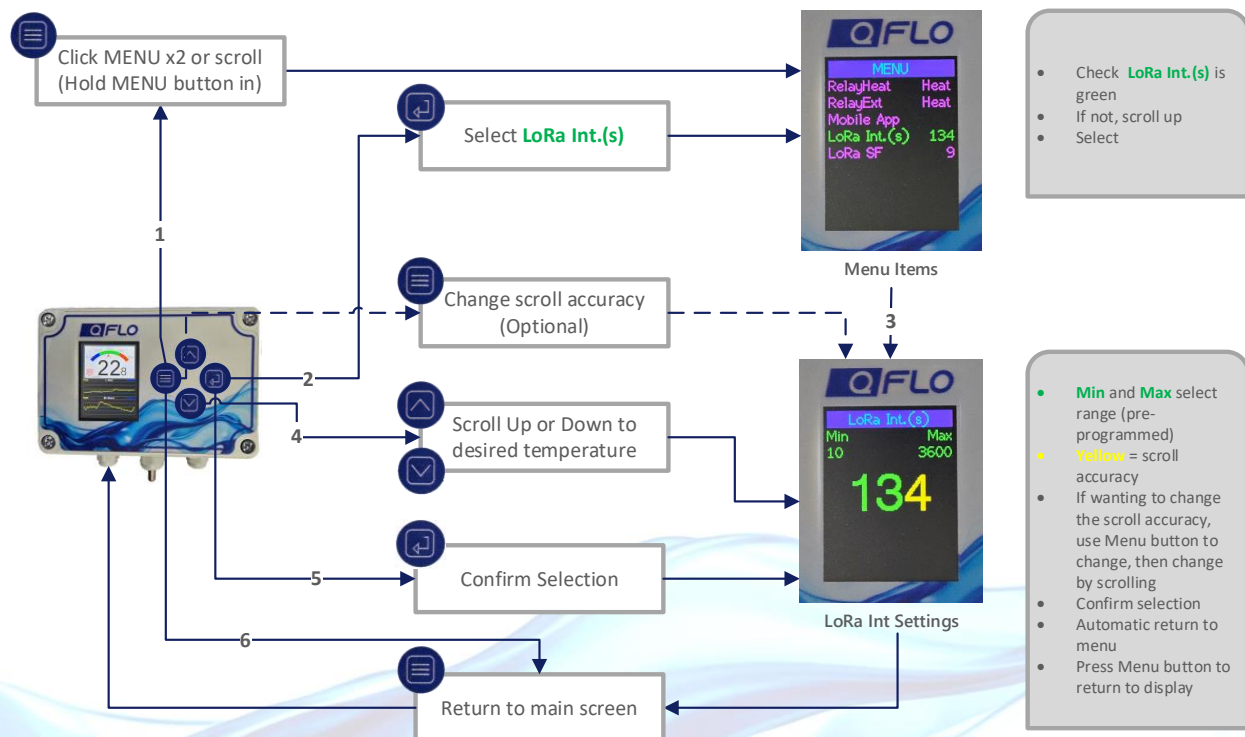


Figure 2: Mobile Application Selection Process